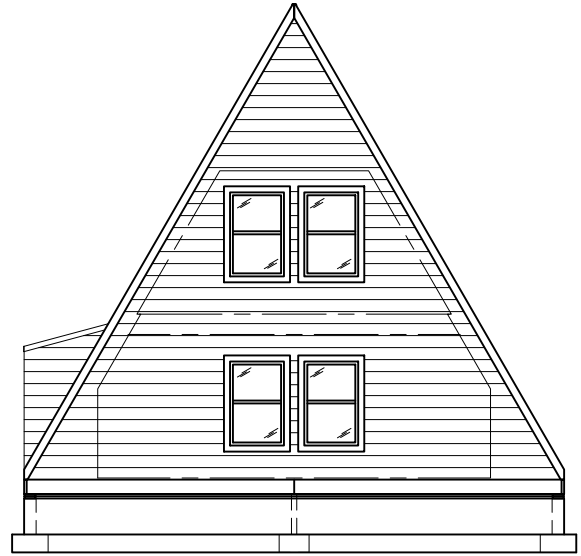
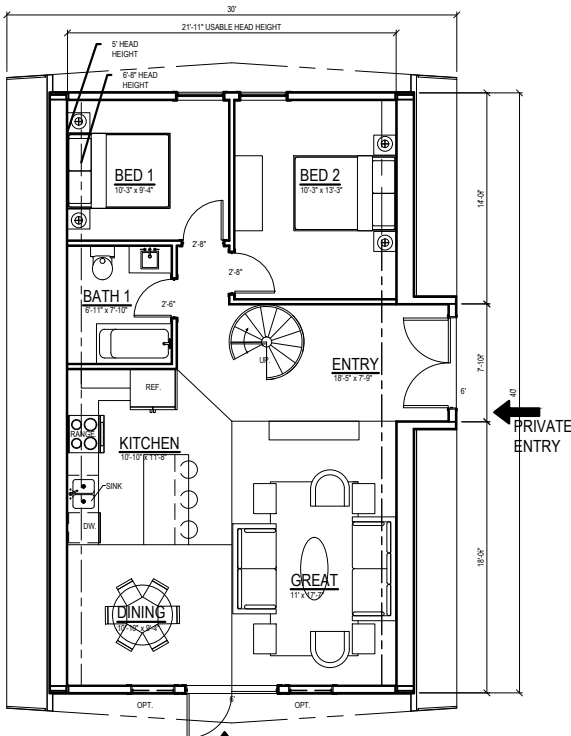


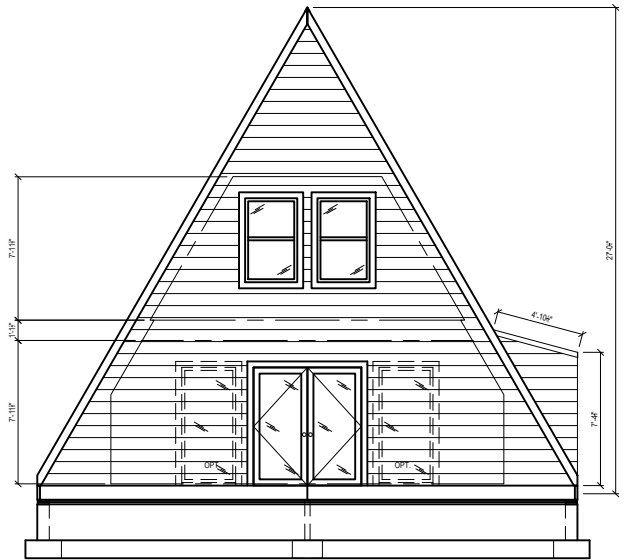
**4 UPPER FLOOR PLAN**  
NTS



**2 REAR ELEVATION**  
NTS



**3 MAIN FLOOR PLAN**  
NTS



**1 FRONT ELEVATION**  
NTS



**avrame**

6223 WEST DOUBLE EAGLE CIRCLE, SALT LAKE CITY, UTAH 84118  
 PH: 866.287.2632 - WWW.AVRAMEUSA.COM  
 EMAIL: SALES@AVRAMEUSA.COM

PROJECT:

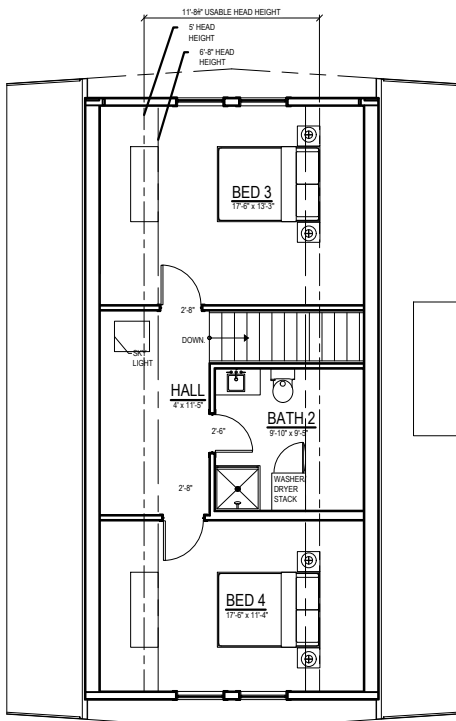
TRIO-DORMER-120-SPIRAL STAIR

DATE CREATED:

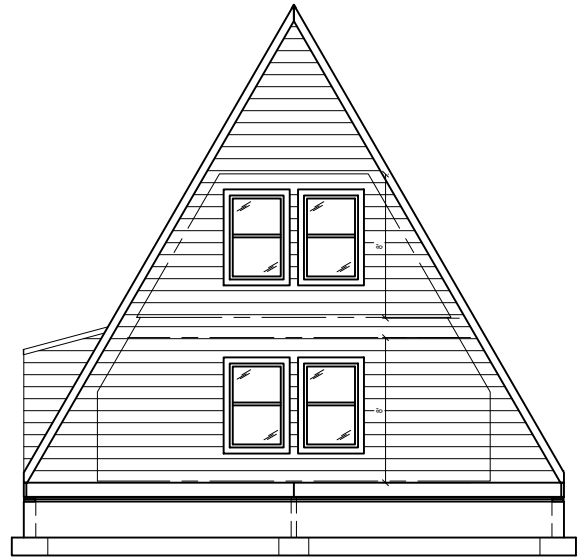
11/13/2018

NOTES: (STANDARD) USABLE AREA: 1,400 SQ'  
 (OPEN TO ABOVE) USABLE AREA: 1,200 SQ'  
 DIMENSIONS ON PLANS MAY VARY FROM BUILT PRODUCT.

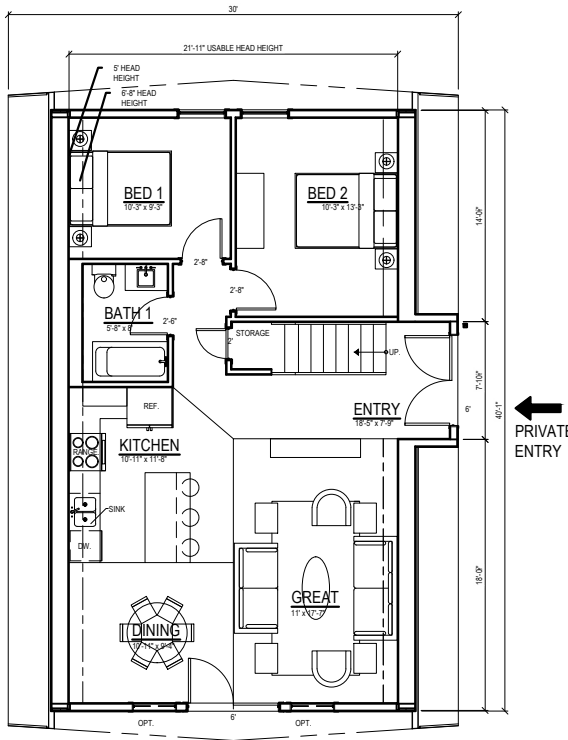
**T-120-SP**



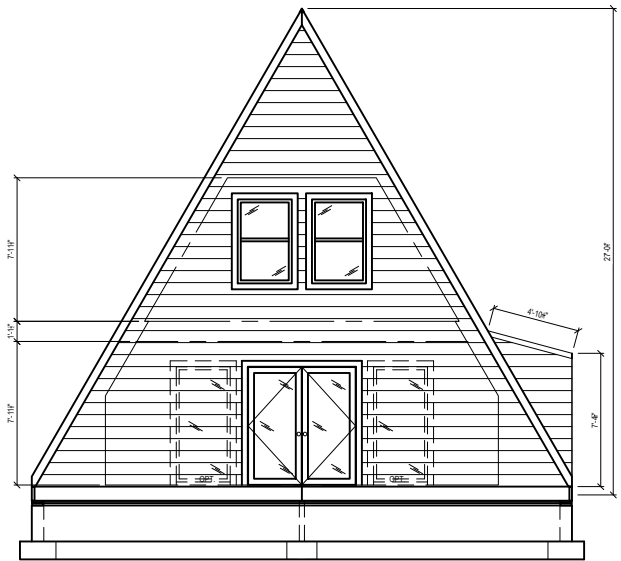
**4 UPPER FLOOR PLAN**  
NTS



**2 REAR ELEVATION**  
NTS



**3 MAIN FLOOR PLAN**  
NTS



**1 FRONT ELEVATION**  
NTS



**avrame**

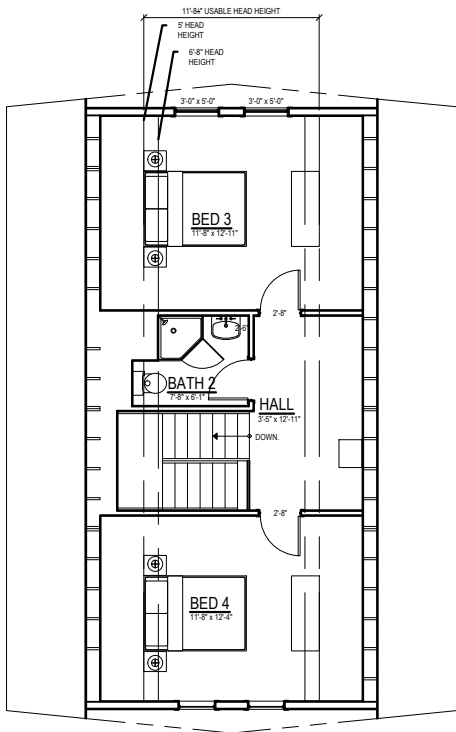
6223 WEST DOUBLE EAGLE CIRCLE, SALT LAKE CITY, UTAH 84118  
 PH: 866.287.2632 - WWW.AVRAMEUSA.COM  
 EMAIL: SALES@AVRAMEUSA.COM

PROJECT: TRIO-DORMER-120-STRAIGHT STAIR

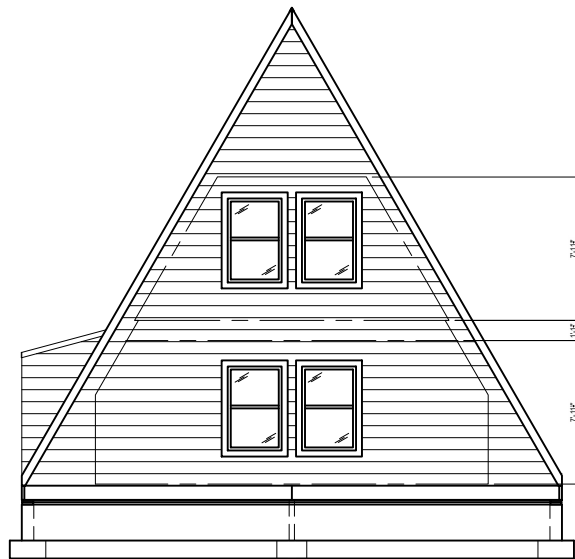
DATE CREATED: 11/13/2018

NOTES: (STANDARD) USABLE AREA: 1,400 SQ'  
 (OPEN TO ABOVE) USABLE AREA: 1,200 SQ'  
 DIMENSIONS ON PLANS MAY VARY FROM BUILT PRODUCT.

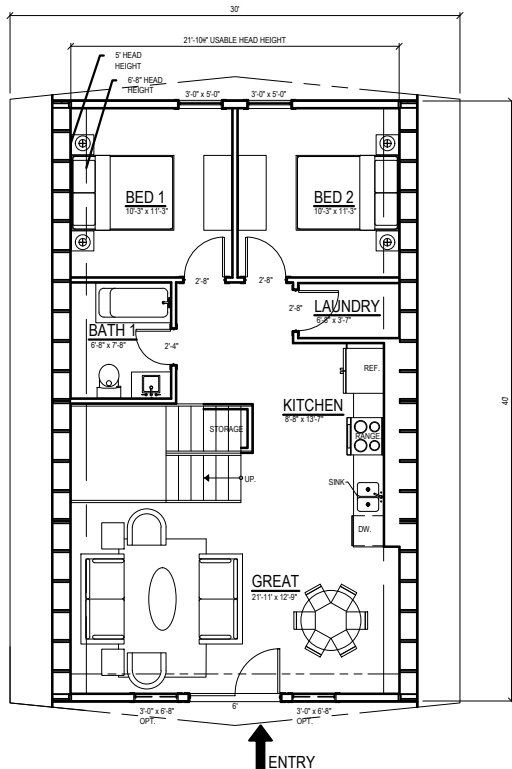
**TD-120-SS**



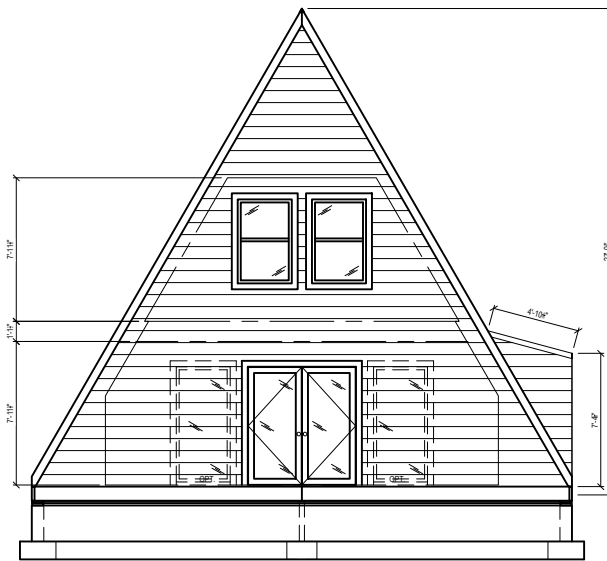
4 UPPER FLOOR PLAN  
NTS



2 REAR ELEVATION  
NTS



3 MAIN FLOOR PLAN  
NTS



1 FRONT ELEVATION  
NTS



**avrame**

6223 WEST DOUBLE EAGLE CIRCLE, SALT LAKE CITY, UTAH 84118  
PH: 866.287.2632 - WWW.AVRAMEUSA.COM  
EMAIL: SALES@AVRAMEUSA.COM

PROJECT:

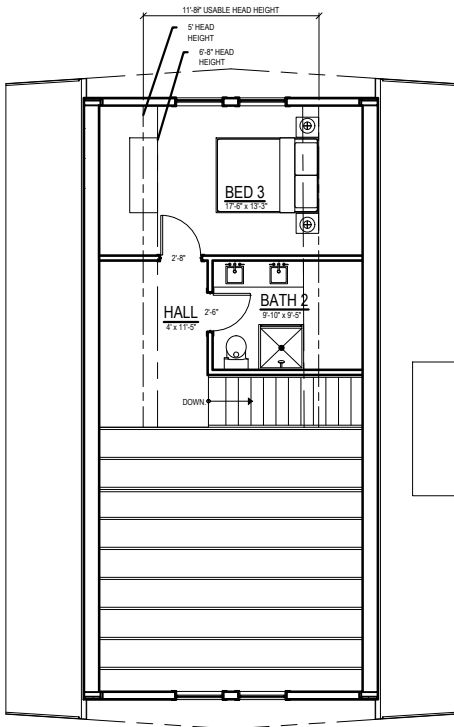
TRIO-120-U-STAIR

DATE CREATED:

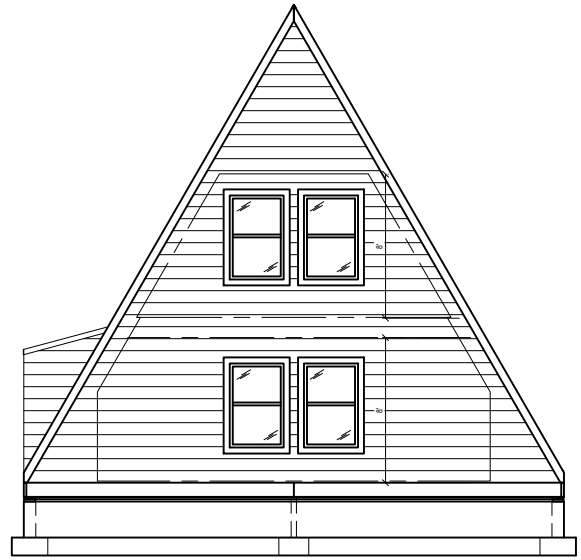
12/05/19

NOTES: (MAIN FLOOR) USABLE AREA: 853 SQ'  
(2ND FLOOR) USABLE AREA: 456 SQ'  
(TOTAL) USABLE AREA: 1,309  
DIMENSIONS ON PLANS MAY VARY FROM BUILT PRODUCT.

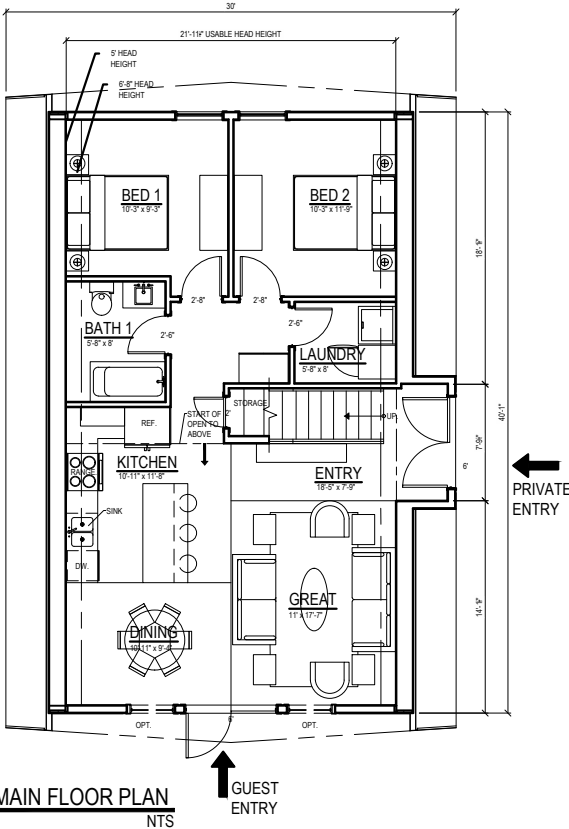
T-120-US



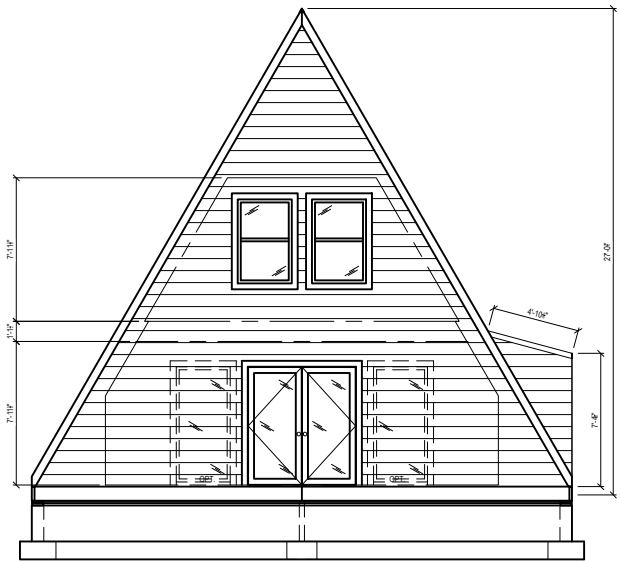
**4 UPPER FLOOR PLAN**  
NTS



**2 REAR ELEVATION**  
NTS



**3 MAIN FLOOR PLAN**  
NTS



**1 FRONT ELEVATION**  
NTS



**avrame**

6223 WEST DOUBLE EAGLE CIRCLE, SALT LAKE CITY, UTAH 84118  
 PH: 866.287.2632 - WWW.AVRAMEUSA.COM  
 EMAIL: SALES@AVRAMEUSA.COM

PROJECT: **TRIO-DORMER-OPEN-120-STRAIGHT STAIR**

DATE CREATED: 11/13/2018

NOTES: (STANDARD) USABLE AREA: 1,400 SQ'  
 (OPEN TO ABOVE) USABLE AREA: 1,200 SQ'  
 DIMENSIONS ON PLANS MAY VARY FROM BUILT PRODUCT.

**TDO-120-SS**